





CHRISTOPHE HARBOUR

ST. KITTS



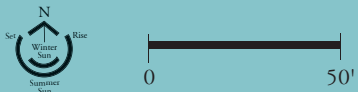
LOT 330

BASE MAP

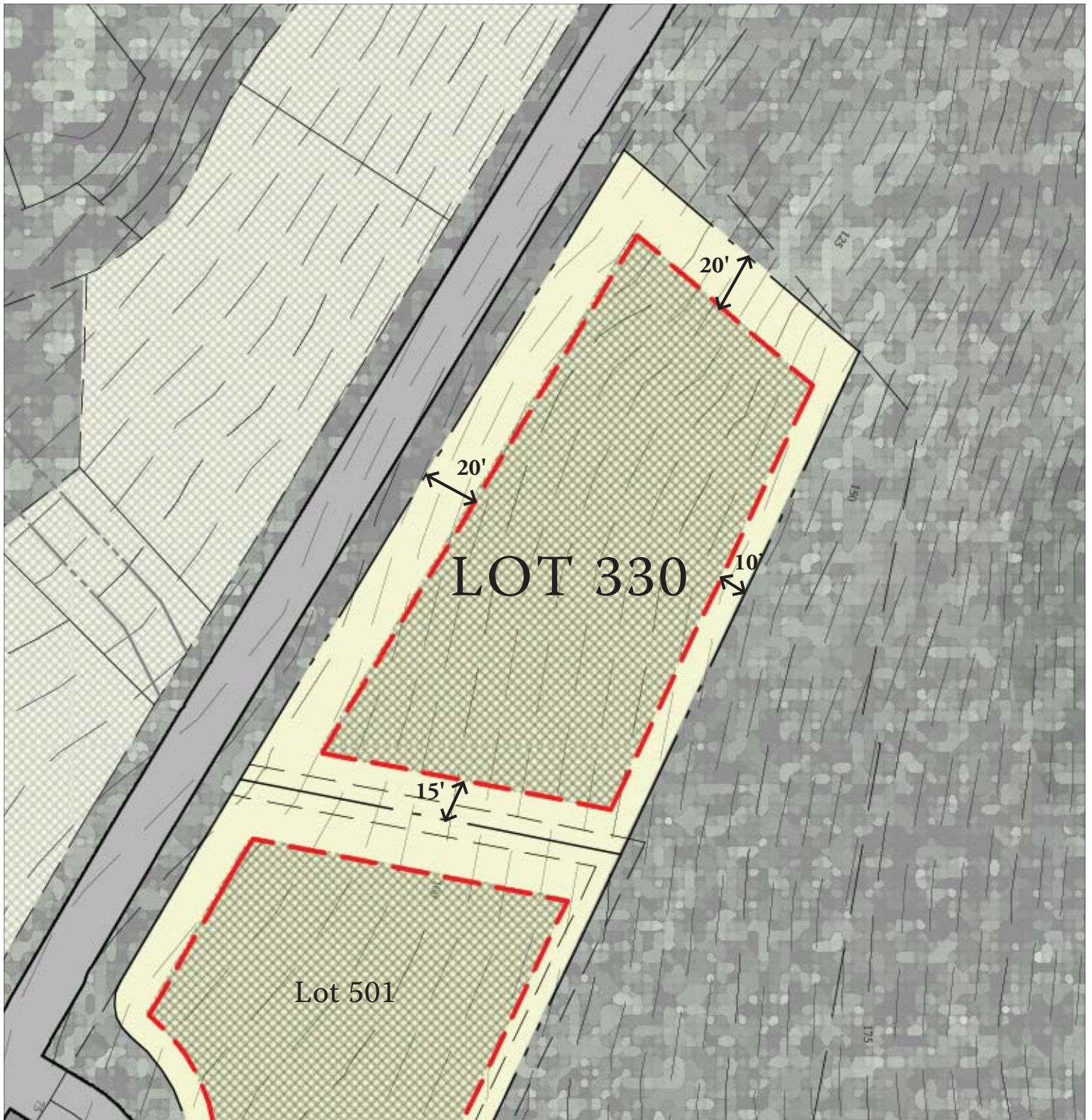
-  Property Line
-  Building Envelope
(defined by the front, rear and side vertical setbacks)*
-  Improvement Envelope
(defined by the front, rear and side improvement setbacks)*
-  Natural Area
(defined as the area outside of the Improvement Envelope)*

Maximum Ridgeline Elevation: + 130 ft A.S.L.

* Refer to the Design Guidelines for Sandy Bank Bay for more information on design criteria including building height, site coverage, and building and improvement envelope definitions.



The purpose of the Homesite Diagram (base map and overlay) is to assist the Owner in understanding existing site conditions and how a house, and other site improvements, can both respect and make full use of the features of the site.



CHRISTOPHE HARBOUR ST. KITTS



LOT 330

HOMESITE OVERLAY

Approx. Acreage:	.64 acres
House Type:	Custom
House Size:	up to 8,000 sf
Main Level:	2,725 sf
Upper Levels:	5,000 sf
Garage:	600 sf



This overlay illustrates locations for building and site improvements, which have been determined by the DRB to satisfy the resource conservation and community design objectives of Sandy Bank Bay. The DRB may determine that other locations within the Homesite also meet these objectives. However, notwithstanding this illustration, the DRB shall review and approve all building and site improvements, including those illustrated, in accordance with the policies and procedures of the Design Guidelines at Sandy Bank Bay.

The purpose of the Homesite Diagram (base map and overlay) is to assist the Owner in understanding existing site conditions and how a house, and other site improvements, can both respect and make full use of the features of the site. All sizes and dimensions are approximate.

